

# ETICS internal on masonry

Thermal insulation composite system for internal walls in wood fiber Internal and cement bonded particle boards on masonry

# Beton Wood

Complete internal insulating wall systems with high performances



## | DESCRIPTION

The complete building system for high performances internal wall ETICS **internal on wood** is easy and quick to install, guarantees maximum comfort and durability over time, with the international ETA certification.

It is the ideal system to realize light walls in BetonWood cement bonded particle boards with high mechanical resistance for the thermal and acoustic insulation, both internal and external, of the dry systems in wood (type X-Lam or Platform Frame), but also on masonry.

The thermal insulation composite system ETICS **internal on wood** consists in the installation of a FiberTherm internal wood fiber filling in the wooden frame and an external covering with BetonWood N cement bonded particle boards with high performances.

The stratigraphy consists in wood fiber panels Fibertherm **internal** interposed between the beams of the wooden frame to ensure thermal insulation, and an external paneling in BetonWood N cement bonded particle boards, CE certified, fixed with auto-counter-sunk NF 57 Screws directly on the wooden frame structure. On the external side, we recommend to lay a first skimming and bonding layer BetonAR1, the glass fiber net with high density for thermal insulation composite system BetonGlass 360 and then, a second skimming layer BetonAR1.

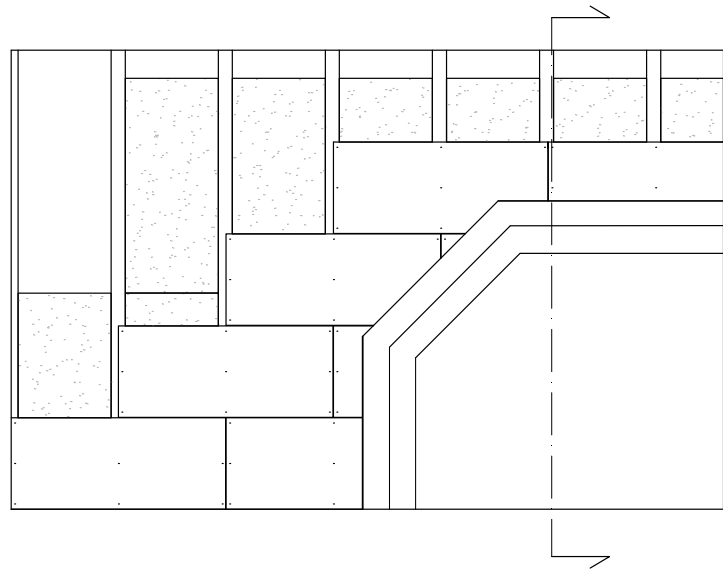
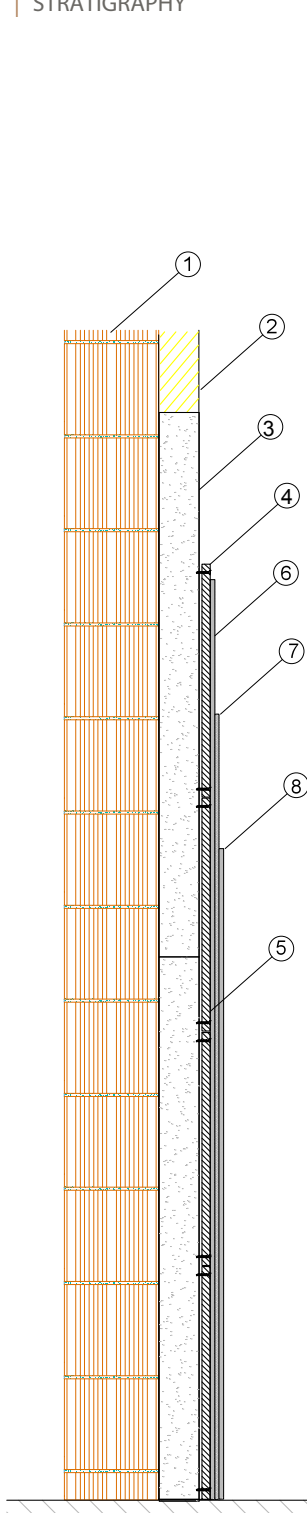
## Advantages

- Approved and secure fixing system.
- Complete system: panels, skimming layers, installation products and accessories
- Easy and quick to install
- For continuous thermal insulation without thermal bridges and condensation
- Excellent thermal and acoustic insulation
- Fire resistance class A2
- Excellent mechanical resistance against burglary, antivandalism

For more informations about the uses and the installation, our offices are ready to answer your questions on [www.betowood.com](http://www.betowood.com)



STRATIGRAPHY



- 1 Masonry or x-lam wall
- 2 Wood frame structure
- 3 **Fibertherm Internal 160 wood fiber** Wood fiber panels for internal thermal insulation composite systems FiberTherm Internal density 160 kg/m<sup>3</sup>. The wood fiber panel is a thermo-acoustic insulation suitable for thermal insulation systems, wet produced.
- 4 **Cement bonded particle boards BetonWood N** Cement bonded particle boards with high density 1350 kg/m<sup>3</sup> and an excellent compressive resistnace 9000 kPa, fire resistant (A2 class). Panel size 1220x520 mm and thickness 18 mm
- 5 **NF57 Screws** Auto-countersunk screw for the fixing of BetonWood N cement bonded particle boards directly on the wood frame structure. No. 9 screws for fixing any panel.
- 6 **Beton AR1** Monocomponent cementitious mortar for bonding and smoothing of thermal insulation panels and BetonTherm "reinforced thermal insulation composite systems".
- 7 **Glassfiber net BetonGlass 360** Glass fiber net with density 360 g/m<sup>3</sup> warp-proof and alkali-resistant, used in armored thermal insulation systems. Indispensable in Beton-Therm systems.
- 8 **Beton AR1** Monocomponent cementitious mortar for bonding and smoothing of thermal insulation panels and BetonTherm "reinforced thermal insulation composite systems".



## | SYSTEM'S PRODUCTS



**BetonGlass 360** The net has density  $360 \text{ g/m}^3$  and complies with the ETAG004 Guideline for ETICS (External Thermal Insulation Composite System), as certified by IFBT GmbH-MFPA Leipzig GmbH. It is suitable for internal and external armored thermal insulation (suitable for any type of BetonTherm product).  $50 \text{ m}^2$  rolls.



**RECOMMENDED - BetonAR1** Monocomponent cementitious mortar for bonding and smoothing of thermal insulation panels and BetonTherm "reinforced thermal insulation composite systems".

- $4,0 - 6,0 \text{ kg/m}^2$  depending on the gluing technique
- $1,3 - 1,5 \text{ kg/m}^2$  per mm of skimming layer thickness (recommended: approx. 4 mm within 2 hands).

Application: spatula



**Screws NF 57** The screw has a special anti-corrosion coating that guarantees a 1,000-hour salt spray resistance. Under-head with very sharp self-sinking fins for a perfect housing of the head flush with the slab. Spoon tip (spoon) with very high perforation capacity.



**Fibertherm Internal 160** Wood fiber density  $160 \text{ Kg/m}^3$ . The wood fiber panel is a thermo-acoustic insulation suitable for thermal insulation systems, wet produced. Panel sizes  $1350 \times 600 \text{ mm}$  or  $1200 \times 380 \text{ mm}$ . Available with tongue&groove, stepped or sharp edges and in various thicknesses from 20 to 60 mm.



**BetonWood N** The Betonwood cement bonded particle board, high density ( $1350 \text{ Kg/m}^3$ ), realized with Portland cement conglomerate and debarked Pine wood fiber. Thermo-dynamics characteristics: thermal conductivity coefficient  $\lambda=0,26 \text{ W/mK}$ , specific heat  $c=1,88 \text{ KJ/Kg K}$ , coefficient of resistance to vapor penetration  $\mu=22,6$  and fire resistant class  $A2\text{-fl-s1}$ , according to the standard EN 13501-1.

BETONWOOD Srl

Head office :  
Via Falcone e Borsellino, 58  
I-50013 Campi Bisenzio (FI)

T: +39 055 8953144  
F: +39 055 4640609

info@betonwood.com  
www.betonwood.com

PIBTWFTHIM - ST R.18.5

## | CERTIFICATIONS

The insulation system for internal walls ETICS internal on wood is made with CE certified materials in accordance with current regulations.

The certificates of the individual products are available on request.

**Beton Wood**

