

Fibertherm underfloor

underlay for parquet and laminate flooring

Install instruction



PRODUCT DESCRIPTION

Fibertherm **underfloor** is a wood fibre insulation board produced in accordance with EN 13986 and EN 622-4 and with ongoing quality supervision. It provides outstanding impact sound insulation and improvement of the acoustics as well as excellent insulating qualities.

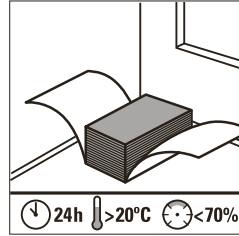
AREAS OF APPLICATION

Impact sound insulation on parquet and laminate floorings up to 19 dB. Improvement of the acoustics on parquet and laminate floorings.

TECHNICAL VALUES ACCORING TO CEN/TC 16354

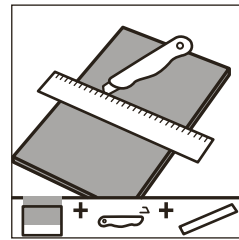
		3 mm	4 mm	5 mm	7 mm
Protection against unevenness	PC	1,0 mm	1,6 mm	2,0 mm	2,9 mm
Compressive strength	CS	>150 kPa	>150 kPa	>150 kPa	>150 kPa
Compressive creep resistance	CC	>50kPa	>50kPa	>50kPa	>50kPa
Dynamic load resistance	DL ₂₅	>150.000 cicli	>150.000 cicli	>150.000 cicli	>150.000 cicli
Thermal resistance	R	0,043m ² K/W	0,057m ² K/W	0,071m ² K/W	0,100m ² K/W
Water vapour diffusion resistance	SD	0,02 m	0,02 m	0,03 m	0,04 m
Resistance to impact by large diameter ball	RBL	>800 mm	>800 mm	>800 mm	>900 mm
Impact sound	IS _{LAM}	19 dB	19 dB	19 dB	19 dB
Fulfills minimum requirement of EPLF		yes	yes	yes	yes

For more informations about the uses and the installation, our offices are ready to answer your questions on www.fibradilegno.com



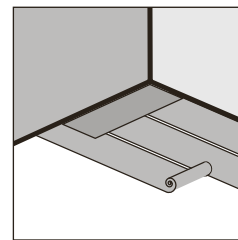
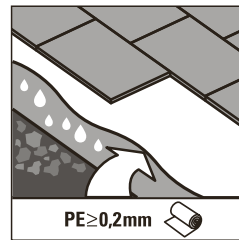
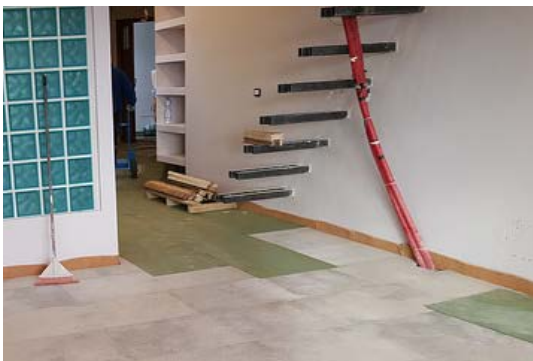
| PREPARATION

Fibertherm **underfloor** is a natural product and therefore should be allowed to acclimatise for at least 24 hours (in the room in which it is being used).



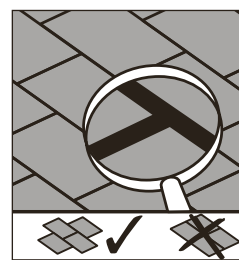
| TOOLS REQUIRED

Can be cut using a suitable utility knife and straight edge.



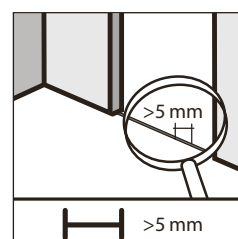
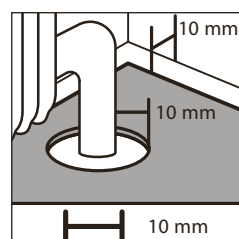
| FLOOR'S PRETREATMENT

A fully sealed vapour barrier should be incorporated on all mineral based substrates. The photo represent Fibertherm **underfloor** laid on cement bonded particle boards BetonWood (recommended choice).



| MOUNTING INSTRUCTION

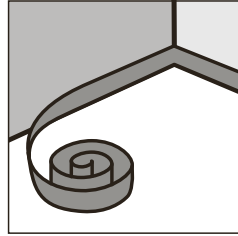
Fibertherm **underfloor** should be laid loose with a stagger of half the board length. A gap of 3 mm should be kept between the individual boards.



| DISTANCES

At walls, ducts etc. a minimum edge distance of 10 mm should be maintained.

At panel joints in doorways a minimum gap of 10 mm should be maintained.



| COMPLEMENTARY PRODUCTS

Use Fibertherm **soundstrip** for noise reduction at connections to rising components such as walls.



| FINISHES

Fibertherm **underfloor** can be completed with dry wood and ceramic superficial finishes.

In the figure we can see a parquet finished floor.

Head office:
Via Falcone e Borsellino, 58
I-50013 Campi Bisenzio (FI)

T: +39 055 8953144
F: +39 055 4640609

info@betonwood.com
www.betonwood.com

FTHUN IP.18.02



Das Zeichen für verantwortungsvolle Waldbirtschaft

